

system which gave rise to the form of Santa Fe is honored in a demonstrable way in the Central Arboretum. The plan proposes to uncover previously covered areas and to provide a demonstration project that will educate future generations about this cultural landscape artifact.

Arboretum - At the relative center of the Rail yard site, at the crossroads of the Rail line, Guadalupe, Cerrillos and Saint Francis, a botanical garden has been created. The Arboretum contains numerous landscape elements.

Water Conservation Garden - Demonstrating the wise use of water in an arid environment, this garden will be a public place of symbolic and educational importance. Incorporating principles of drought tolerant design, native and indigenous plants, this garden is shown as the spiral on the plan, where the visitor moves along a path down towards the center where the wettest landscapes exist, from the fringe where drier landscape occurs.

Healing Garden - The Curandera, the native healer and the contemporary healer derive much from the earth. This garden is planted with medicinal herbs, flowers and

plants that aid in the healing process. Meditative spaces are provided throughout.

Prairie Dog Habitat - Current residents of this site, the prairie dog as well as other wild life will be celebrated in a naturalistic landscape that covers much of the site.

Enchanted Landscape - The New Mexico Landscape is celebrated with land forms and plantings of native heritage.

Traditional landscapes - The plants and landscape of the settlers of this place are shown in a demonstration garden throughout the site.

Cienega - A small body of water, using reclaimed storm water is placed in the Arboretum to demonstrate naturalistic water in the arid southwest.

Bosque - A formal grid of trees suggests an orchard to provide shade and canopy.

Community garden - where manageable, community gardens are provided.

Streetscape:

Major Streets - we suggest separating the sidewalk from the back of the pavement with a minimum six foot planting

between the back of curb and sidewalk. Lighting on new specially designed light fixtures is also suggested.

Neighborhood streets - Extending this new common ground into the community and adjacent neighborhoods, the streetscape includes street tree plantings where possible.

Neighborhood Connections - Pedestrian bridges are suggested to reconnect neighborhood streets to the trail system.

Multi-modal Trail - An alley of trees line this twelve foot wide path that lies along the rail corridor, connecting southwest and northeast ends of the park.

Public Art - there are many opportunities for public art in this park. A large public monument is suggested at the intersection of the crossroads of St. Francis and Cerrillos to form a gateway into the City.

Regional open Space Network - This park connects with the regional trails, the other parks and open space elements of the district.

Edge conditions - Ideally, the park edges will be resolved to form a continuous connection with the context.

Borrowed landscapes - though not officially part of the rail yard site, the Cemetery, the

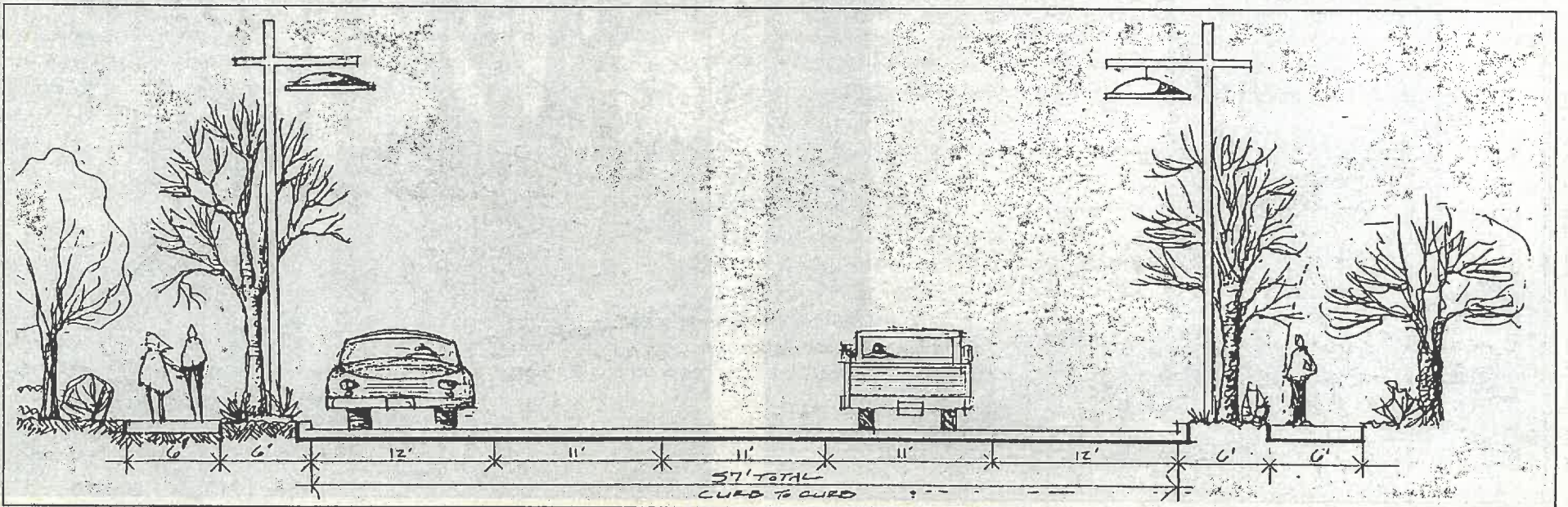
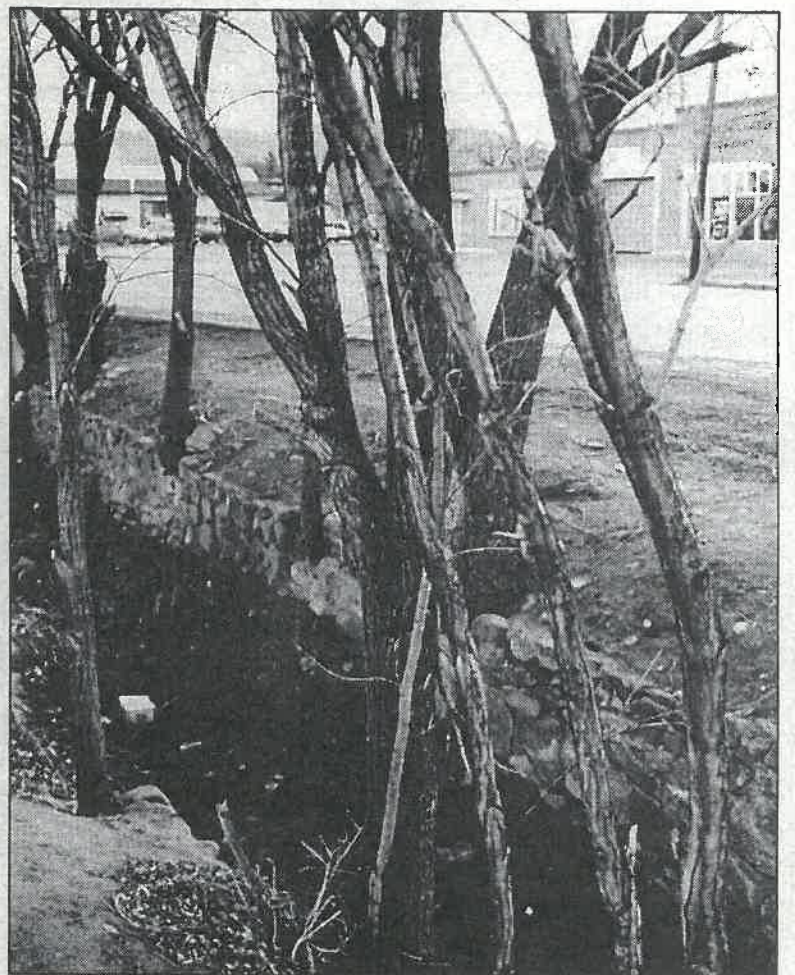
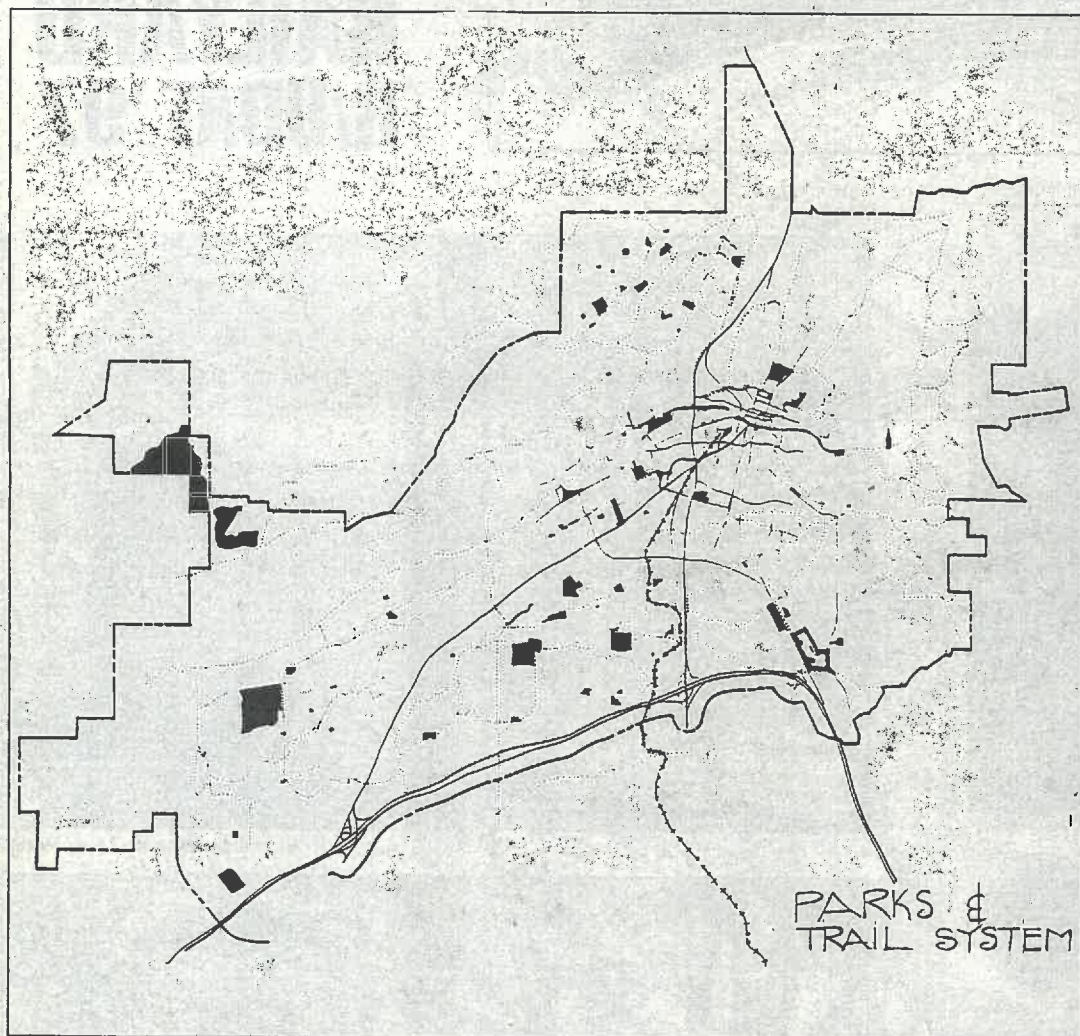
School for the Deaf as well as the street environment are to be considered part of this central common ground.

Distant views - Panorama and vistas have been preserved in this plan.

Prairie - On the PNM site, a grassland planting is suggested.

Bioremediation - Where possible, perhaps on the PNM site, utilize bio-aquatic techniques for remediating ecological conditions in a demonstrative and aesthetic manner.

Santa Fe must confront change in a serious and positive way. Like the moon that must change to show the same face, rotating on its axis at the rate of its orbit, so too must Santa Fe move gently towards its future in order to retain its rich history and heritage. Without this progressive movement, there is the real risk of stagnation, division and decay. The Railyard park represents a catalytic moment in the life of this City. It is symbolic of the crossroads of this change. The hope of this new common ground is that it becomes the manifestation of the movement forward which allows Santa Fe to continue to remain what it is and to show its incredible face to its citizens, its guests and the world.



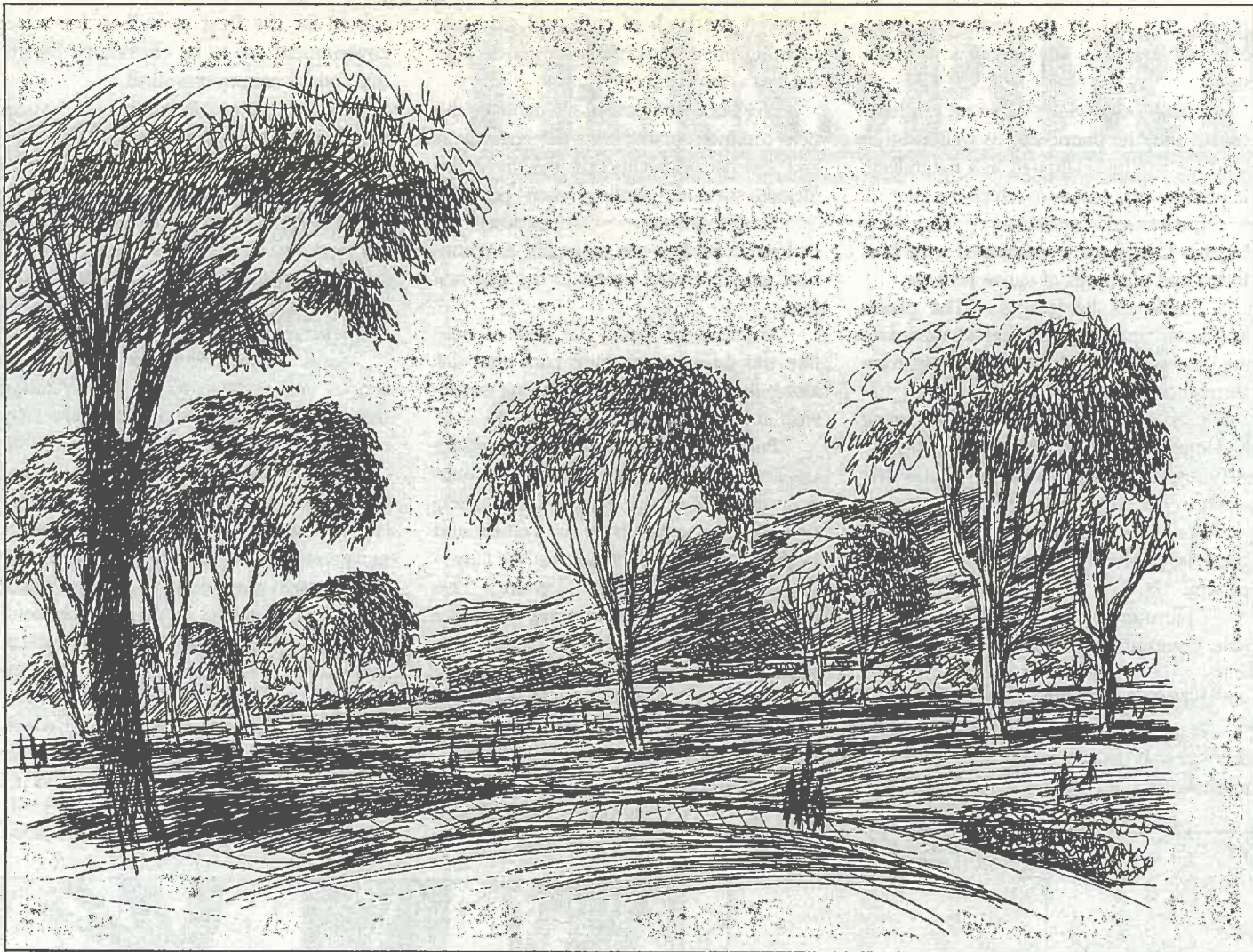


Photo courtesy Museum of New Mexico



Photo courtesy Museum of New Mexico

Visualize  **Railyard**
 Help decide its uses and plan its future

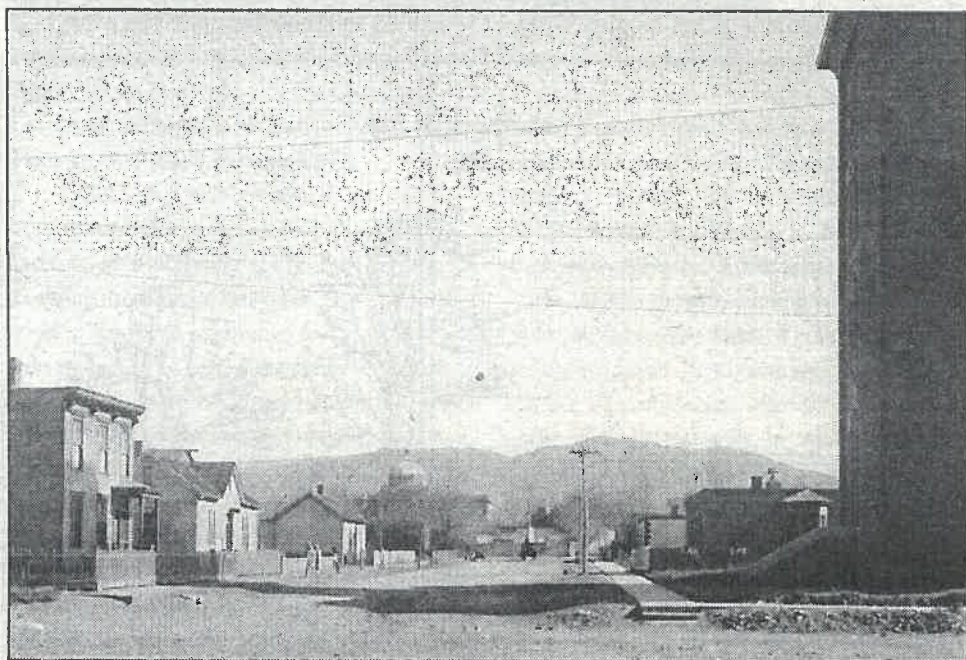
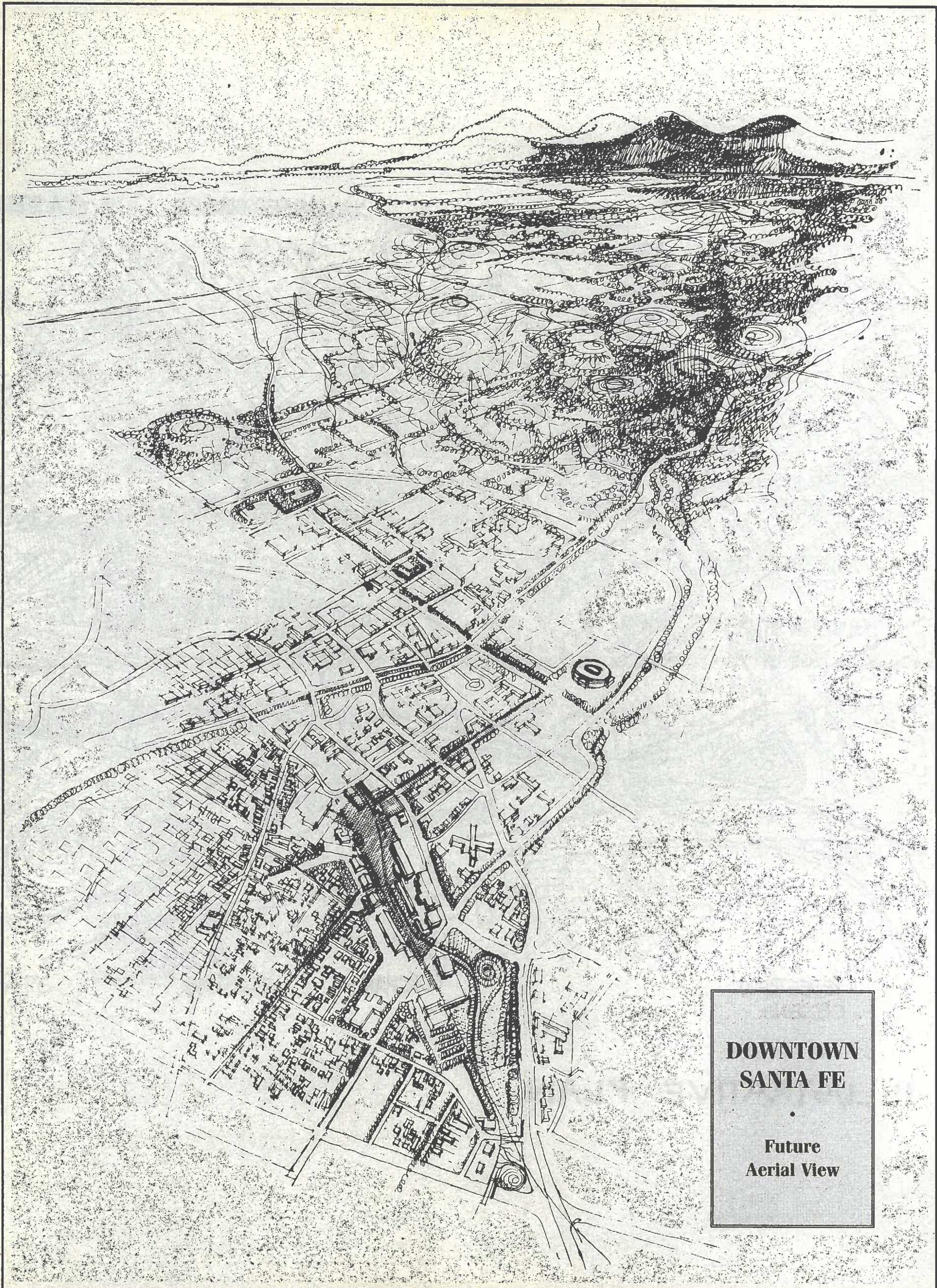


Photo courtesy Museum of New Mexico

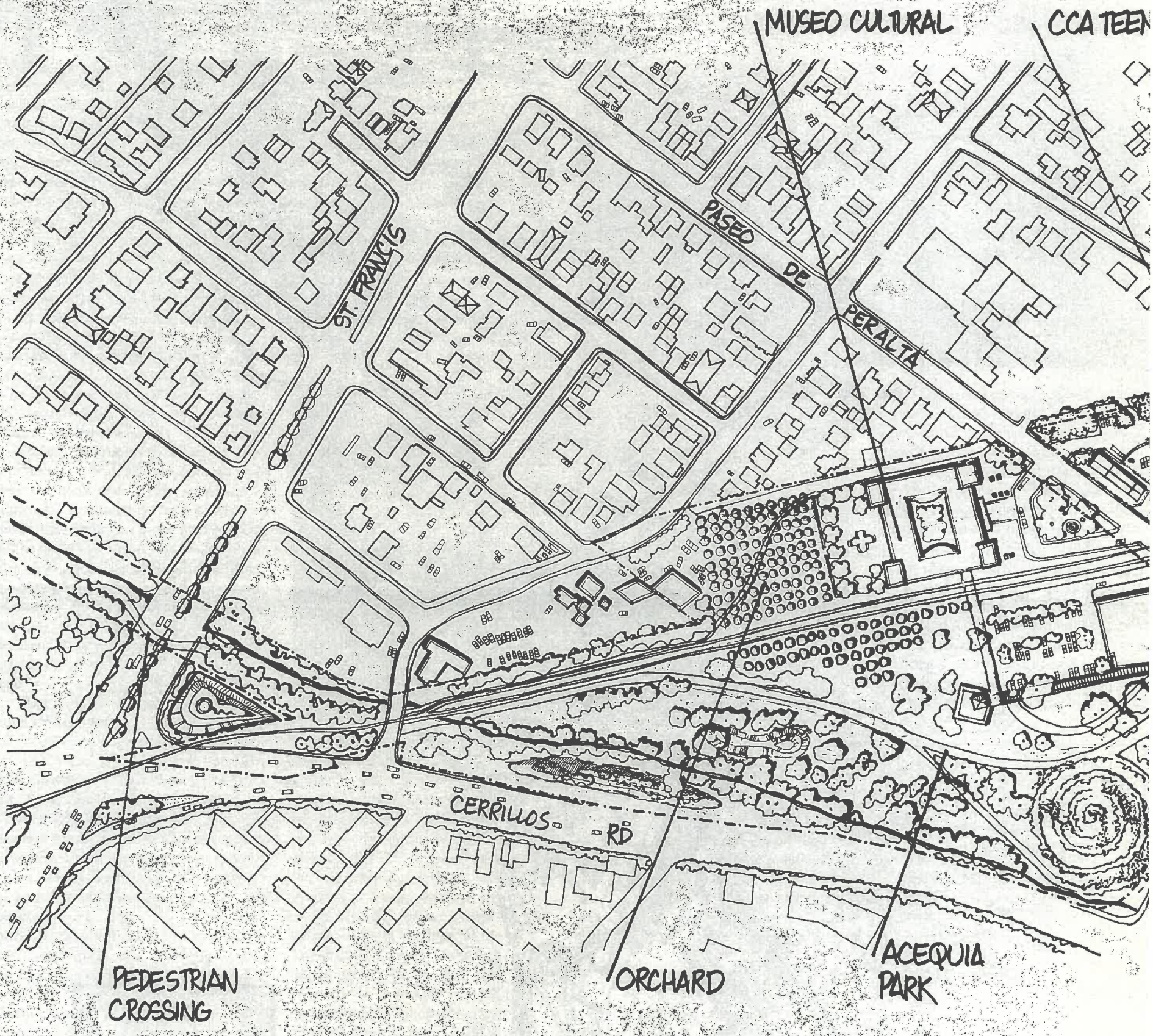


Photo courtesy Museum of New Mexico



**DOWNTOWN
SANTA FE**
•
**Future
Aerial View**

PROPOSED TRAIN STATION NEIGHBORHOODS SURROUNDING



ILLUSTRATIVE PLAN